

	Semester credit hours	Quarter credit hours
English (must include oral and written communication)	6	8
General biology	8	12
General chemistry with lab	8	12
Organic chemistry with lab	8	12
Microbiology	3	4
Separate courses in Anatomy and Physiology or combined Anatomy and Physiology course	8	12
Calculus I	3	4
Biochemistry (optional)	3	4
Statistics	3	4
Social or behavioral science	2	3

Find complete information about prerequisite courses, including AP information, at binghamton.edu/pharmacy-and-pharmaceutical-sciences/students/future/prereq-courses.html.



BINGHAMTON UNIVERSITY'S SCHOOL OF PHARMACY DOCTOR OF PHARMACY ACCREDITATION STATUS

The professional degree program of a college or school of pharmacy is granted accreditation status if it has been demonstrated to the satisfaction of Accreditation Council for Pharmacy Education (ACPE) that the program complies with accreditation standards, including the appropriateness of the program's mission and goals, the adequacy of resources and organization to meet the mission and goals, outcomes that indicate that the mission and goals are being met, and the reasonable assurance of the continued compliance with standards.

The Binghamton University School of Pharmacy and Pharmaceutical Sciences' Doctor of Pharmacy program holds accreditation from the Accreditation Council for Pharmacy Education (ACPE), 190 S. LaSalle Street, Suite 2850, Chicago, IL 60603, 312-664-3575; Fax 866-228-2631, website www.acpeaccredit.org.

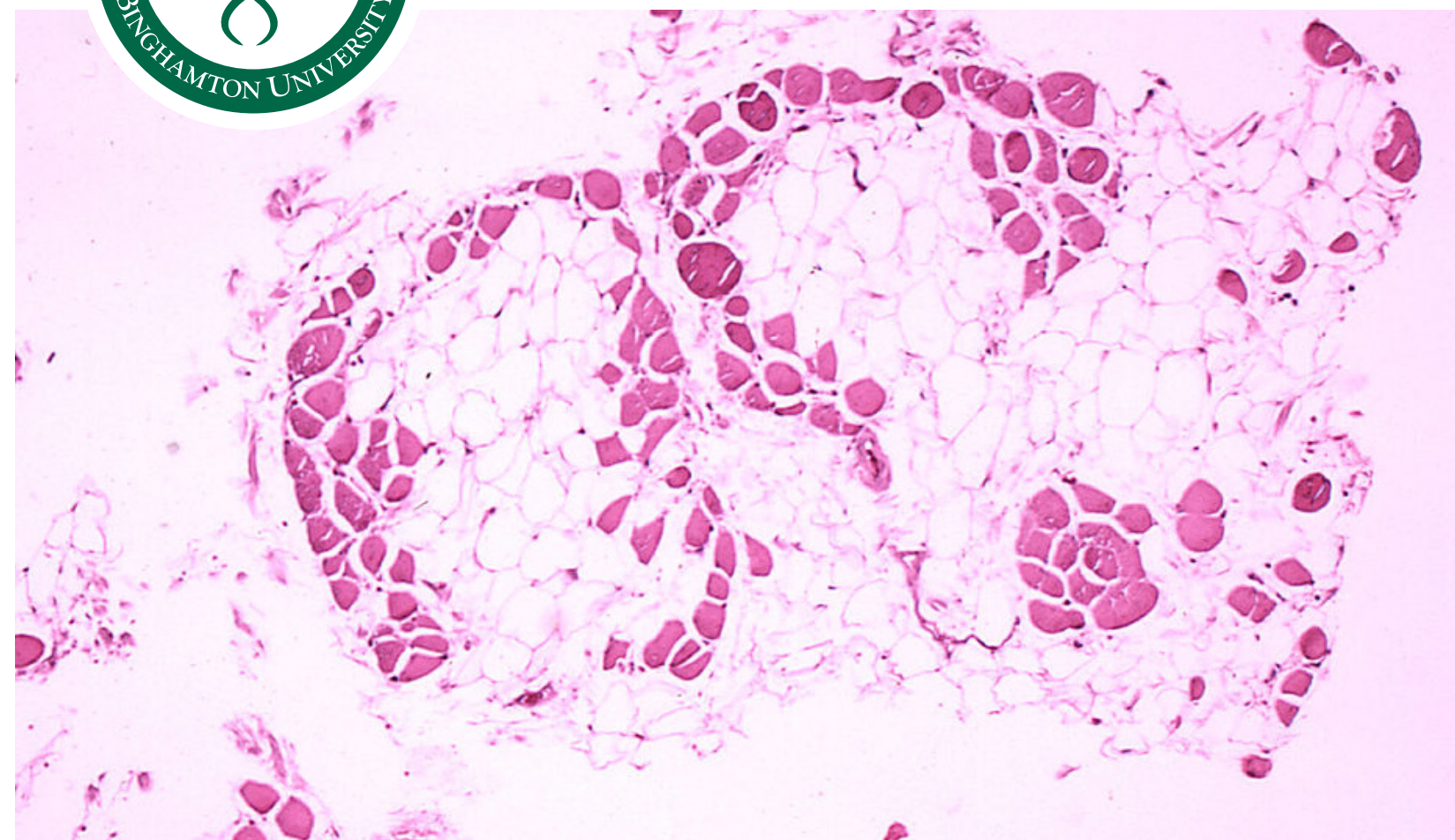
“WHAT SALARY CAN I EXPECT TO MAKE AS A PHARMACIST?”

According to the Bureau of Labor Statistics, the median annual wage and salary of pharmacists in May 2021 was **\$128,570**. Starting salaries vary depending on the practice setting and location.

School of Pharmacy and Pharmaceutical Sciences
 PO Box 6000 Binghamton, NY 13902-6000
 96 Corliss Ave. Johnson City, N.Y. 13790
 Phone: 607-777-5800
 Fax: 607-777-3020
 Email: pharmacy@binghamton.edu
binghamton.edu/pharmacy-and-pharmaceutical-sciences



DOCTOR OF PHARMACY PROGRAM



DOCTOR OF PHARMACY PROGRAM

“WHAT CAN I DO WITH A PHARMACY DEGREE?”

Pharmacy graduates work in any number of places, in any number of careers:

- academia
- pharmaceutical industry (research, regulatory affairs, medical writing, sales, etc.)
- clinics
- community pharmacies
- government (armed forces, FDA, NIH, etc.)
- public health
- health systems
- managed care
- other industries such as insurance companies

The educational experiences of our students include exposure to healthcare and pharmaceutical industries. Additionally, our students have opportunities in original research, global health, and community pharmacy and health system internships.



BINGHAMTON UNIVERSITY has built a reputation as a world-class institution and is proud to be ranked among the elite public universities in the nation. The state of New York provided \$60 million to establish our School of Pharmacy and Pharmaceutical Sciences. This ultramodern 105,000 sq. ft. building has two floors devoted to our high-quality pharmacy education program and two floors devoted to cutting-edge, contemporary, multidisciplinary research at our **Health Sciences Campus**. The research and clinically focused school is training the next generations of Doctor of Pharmacy (PharmD) graduates to deliver evidence-based, patient-centered pharmaceutical care to diverse groups of patients, especially those who are in under-served rural and geriatric communities. Our state-of-the-art simulation lab provides students with the resources to work interprofessionally with a wide variety of health professionals to develop industry-leading clinical skills. Our research (PhD) graduates will be renowned for their contributions to translational, clinical and outcomes research within the changing landscape of drug development, pharmacy practice and clinical science.

Through a formal research track and a capstone experience, students are working with leading scholars/researchers in pharmacy practice, health outcomes and administrative sciences, and pharmaceutical sciences. Research focuses on approaches to testing new drugs, development of sensitive and reliable outcome measures and improvement of clinical decision-making, impacting both the quality and cost of healthcare. Research on clinical trial networks to ensure the safety and efficacy of new drugs and on pharmaceutical products and services is also helping us improve patient outcomes.

TUITION AND FINANCIAL AID

As a public institution, Binghamton University is able to provide a high-quality education at a lower cost. The school also considers all accepted students for merit-based scholarships. For more information on tuition and fees, refer to our website.

	TUITION	FEES	TOTAL
In-state residents	\$26,450	\$4,691	\$31,141
Out-of-state residents	\$37,140	\$4,691	\$41,831



ADMINISTRATIVE AND DEPARTMENTAL STRUCTURE

The dean of the School of Pharmacy and Pharmaceutical Sciences is Kanneboyina Nagaraju, who has been with the school since its inception. He focuses his research in immunology, neuromuscular diseases, autoimmune diseases and drug development.

The school's faculty are divided among two departments:

PHARMACEUTICAL SCIENCES

- Focusing on development and implementation of emerging technologies in the drug development pipeline, such as biomarkers, preclinical efficacy and innovations in clinical trial design.

PHARMACY PRACTICE

- Focusing on the study of the therapeutic benefits and clinical assessment of drugs and devices.

ADMISSION REQUIREMENTS

We accept a diverse group of qualified students from a variety of backgrounds and experiences. Our admissions committee considers a variety of factors in our holistic review process, including academic record, intellectual achievements, extracurricular activities and personal background. Additional consideration will be given to those with community services, patient care, pharmacy or military experience.

STEPS TO TAKE:

- apply to Binghamton via PharmCas
- international students submit WES
- complete 62 credit hours at an accredited college or university
- complete prerequisites with C- or higher prior to matriculation
- hold preferred overall and math/science GPA of 2.75
- PCAT optional



Find additional requirements, including PharmD Technical Standards, annual background and drug screenings, up-to-date immunizations, proof of health insurance and English proficiency on our website.

Invitations for admission interviews are emailed between September and June.

