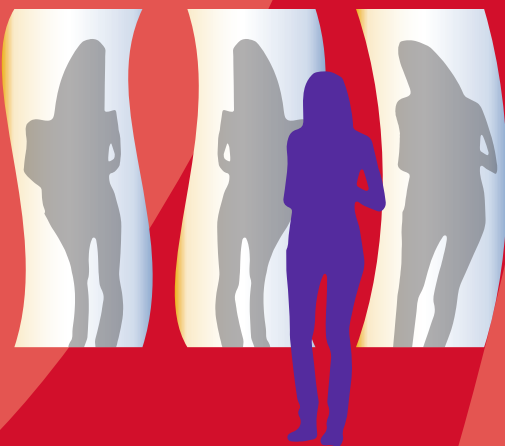




KENTUCKY
SCHOOL
COUNSELOR
ASSOCIATION

Kentucky School Counselors

DEFYING EXPECTATIONS: EXCEEDING LIMITATIONS



SEPTEMBER 11-13, 2024

**GRIFFIN GATE MARRIOTT RESORT AND SPA
LEXINGTON, KY**

SPONSORSHIP PACKAGE

management support provided by



NATIONAL CENTER for
YOUTH ISSUES



SEPTEMBER 11-13, 2024

GRIFFIN GATE MARRIOTT
RESORT AND SPA
LEXINGTON, KY

Kentucky School Counselors DEFYING EXPECTATIONS: EXCEEDING LIMITATIONS



management support provided by NATIONAL CENTER for YOUTH ISSUES



Benefits Received By All Sponsors

All major sponsors that provide at least \$2,000 in cash will receive the following benefits:

- Logo recognition on promotional materials
- E-blast features your organization
- Logo recognition on Participants' Manual
- Name recognition and logo placed on general sponsor recognition signage at the event
- VIP seating at the conference Keynote Event
- Name recognition and/or logo on conference website
- Booth in conference Exhibit Hall (Valued at \$500)
- Contact list of all attendees provided at the conclusion of the conference



Thanks to Our Sponsors!



The following pages indicate additional benefits available for designated sponsorship levels.



BENEFITS RECEIVED BY ALL SPONSORS



SEPTEMBER 11-13, 2024

GRIFFIN GATE MARRIOTT
RESORT AND SPA
LEXINGTON, KY

Kentucky School Counselors DEFYING EXPECTATIONS: EXCEEDING LIMITATIONS



management support provided by NATIONAL CENTER for YOUTH ISSUES

Opening Keynote Session Sponsorship

\$5,000

Dedicated PowerPoint slide recognition will be displayed throughout the Keynote Session indicating your organization as the sponsor and noted as such in the Participants Manual.

Prominent logo placement on the main sponsor recognition PowerPoint slideshow, displayed throughout the conference in the main ballroom.

Logo recognition on signage placed at the entrance to the Keynote Session.

The CEO, or his/her designee will be introduced at the Keynote Session and given 3 minutes to greet guests. The CEO, or his/her designee, will be seated at the speaker's table.

One table at the Keynote Session. Tables provide seating for eight and will be located near the speaker's platform, and may be used for organization employees or other special guests.

A booth in our exhibit hall at which your organization and its products or services can be promoted (Valued at \$500).

Full-page program acknowledgment in the Participants Manual.

Opportunity to insert materials into Participant's Tote Bags



OPENING KEYNOTE SESSION SPONSORSHIP



KENTUCKY
SCHOOL
COUNSELOR
ASSOCIATION

SEPTEMBER 11-13, 2024

GRIFFIN GATE MARRIOTT
RESORT AND SPA
LEXINGTON, KY

Kentucky School Counselors DEFYING EXPECTATIONS: EXCEEDING LIMITATIONS



management support provided by NATIONAL CENTER for YOUTH ISSUES



Promotional Items Sponsorship

PARTICIPANTS TOTE BAG

\$3,500

The organization's name and logo will be the **only sponsor** featured on the Participants Tote Bag.

Inclusion of the organization's name and logo on major sponsor recognition signage and on the Participants Manual.

Full-page program acknowledgment in Participants Manual.

Booth space will be provided in our exhibit hall at which your organization and its products or services can be promoted (Valued at \$500).

Opportunity to insert materials into Participant's Tote Bags

PARTICIPANTS MANUAL

\$3,000

The organization's name and logo will be the **only sponsor** indicated on the front of the Participants Manual, and will also be indicated on every page.

Inclusion of the organization's name and logo on major sponsor recognition signage.

Full-page program acknowledgment in Participants Manual.

Booth space will be provided in our exhibit hall at which your organization and its products or services can be promoted (Valued at \$500).

Opportunity to insert materials into Participant's Tote Bags



PROMOTIONAL ITEMS SPONSORSHIP



SEPTEMBER 11-13, 2024

GRIFFIN GATE MARRIOTT
RESORT AND SPA
LEXINGTON, KY

Kentucky School Counselors DEFYING EXPECTATIONS: EXCEEDING LIMITATIONS



management support provided by NATIONAL CENTER for YOUTH ISSUES

Igniting Passion
Changing Lives



Thanks!
To Our
Closing
Keynote Session
Sponsor



Closing Keynote Session Sponsorship

\$4,000

Dedicated PowerPoint slide recognition will be displayed throughout the Closing Keynote Session indicating your organization as the sponsor and also noted as such in the Participants Manual.

Prominent logo placement on the main sponsor recognition PowerPoint slideshow, displayed throughout the conference in the main ballroom.

Logo recognition on signage placed at the entrance to the Keynote Session.

The CEO, or his/her designee will be introduced at the Keynote Session and given 3 minutes to greet guests. The CEO, or his/her designee, will be seated at the speaker's table.

One table at the Keynote Session. Tables provide seating for eight and will be located near the speaker's platform, and may be used for organization employees or other special guests.

A booth in our exhibit hall at which your organization and its products or services can be promoted (Valued at \$500).

Full-page program acknowledgment in the Participants' Manual.

Opportunity to insert materials into Participants' Tote Bags



CLOSING KEYNOTE SESSION SPONSORSHIP



KENTUCKY
SCHOOL
COUNSELOR
ASSOCIATION

SEPTEMBER 11-13, 2024

GRIFFIN GATE MARRIOTT
RESORT AND SPA
LEXINGTON, KY

Kentucky School Counselors DEFYING EXPECTATIONS: EXCEEDING LIMITATIONS



management support provided by



Thursday Box Lunch Exclusive Sponsorship

\$3,500

Exclusive, dedicated signage recognition will be displayed throughout the Main Luncheon Service Area indicating your organization as the sponsor and noted as such in the Participants Manual.

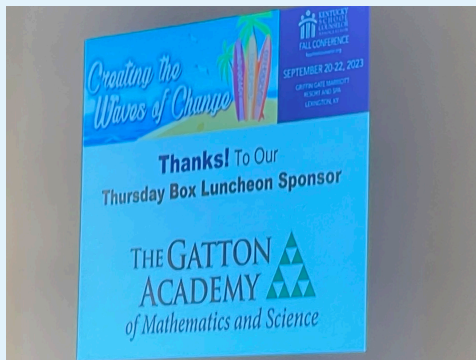
Prominent logo placement on the main sponsor recognition PowerPoint slideshow, displayed throughout the conference in the main ballroom.

Major Logo Recognition on all conference promotional materials, including the conference website.

A booth in our exhibit hall at which your organization and its products or services can be promoted (Valued at \$500).

Full-page program acknowledgment in the Participants Manual.

Opportunity to insert materials in Participants' Tote Bags.



THANKS! To Our
**Thursday Box Luncheon
Sponsor**

**THE GATTON
ACADEMY** 
of Mathematics and Science



THURSDAY BOX LUNCH EXCLUSIVE SPONSORSHIP

Kentucky School Counselors DEFYING EXPECTATIONS: EXCEEDING LIMITATIONS



management support provided by NATIONAL CENTER for YOUTH ISSUES



Event Sponsorship Opportunities

Wednesday Afternoon Pre-Conference Learning Sessions Exclusive Sponsorship

\$2,500

Exclusive logo recognition on dedicated PowerPoint slides at the Pre-Conference Learning Institute.

Exclusive logo recognition on signage placed outside the entrance to each Pre-Conference session.

Major Logo Recognition on all conference promotional materials, including the conference website.

Introduction of a sponsor representative at each Pre-Conference session and the opportunity to bring remarks to attendees (3-5 minutes).

Full-page program acknowledgment in Participants' Manual.

Opportunity to insert materials into Participants' Tote Bags.





KENTUCKY SCHOOL COUNSELOR ASSOCIATION

SEPTEMBER 11-13, 2024

GRIFFIN GATE MARRIOTT RESORT AND SPA LEXINGTON, KY

Kentucky School Counselors DEFYING EXPECTATIONS: EXCEEDING LIMITATIONS



management support provided by NATIONAL CENTER for YOUTH ISSUES



Continental Breakfast Sponsorship

Sponsorship is for both Thursday and Friday's Continental Breakfast

\$2,750

Exclusive, dedicated signage recognition will be displayed throughout the Breakfast Service Area indicating your organization as the sponsor and noted as such in the Participants Manual.

Prominent logo placement on the main sponsor recognition PowerPoint slideshow, displayed throughout the conference in the main ballroom.

Major Logo Recognition on all conference promotional materials, including the conference website.

Booth space will be provided in our exhibit hall at which your organization and its products or services can be promoted (Valued at \$500).

Full page program acknowledgment in Participants Manual.

Opportunity to insert materials into Participants' Tote Bags.



CONTINENTAL BREAKFAST SPONSORSHIP



SEPTEMBER 11-13, 2024

GRIFFIN GATE MARRIOTT
RESORT AND SPA
LEXINGTON, KY

Kentucky School Counselors DEFYING EXPECTATIONS: EXCEEDING LIMITATIONS



management support provided by NATIONAL CENTER for YOUTH ISSUES



Refreshment Breaks Sponsorship

\$2,500

Exclusive, dedicated signage recognition will be displayed throughout the Break Area indicating your organization as the sponsor and noted as such in the Participants Manual.

Prominent logo placement on the main sponsor recognition PowerPoint slideshow, displayed throughout the conference in the main ballroom.

Major Logo Recognition on all conference promotional materials, including the conference website.

Booth space will be provided in our exhibit hall at which your organization and its products or services can be promoted (Valued at \$500).

1/2-page program acknowledgment in Participants Manual.

Opportunity to insert materials into Participants' Tote Bags.



REFRESHMENT BREAKS SPONSORSHIP



SEPTEMBER 11-13, 2024

GRIFFIN GATE MARRIOTT
RESORT AND SPA
LEXINGTON, KY

Kentucky School Counselors DEFYING EXPECTATIONS: EXCEEDING LIMITATIONS



management support provided by NATIONAL CENTER for YOUTH ISSUES



Registration & Information Center Sponsorship

\$2,500

Exclusive, dedicated signage recognition will be displayed throughout the Registration Area indicating your organization as the sponsor and noted as such in the Participants Manual.

Prominent logo placement on the main sponsor recognition PowerPoint slideshow, displayed throughout the conference in the main ballroom.

Major Logo Recognition on all conference promotional materials, including the conference website.

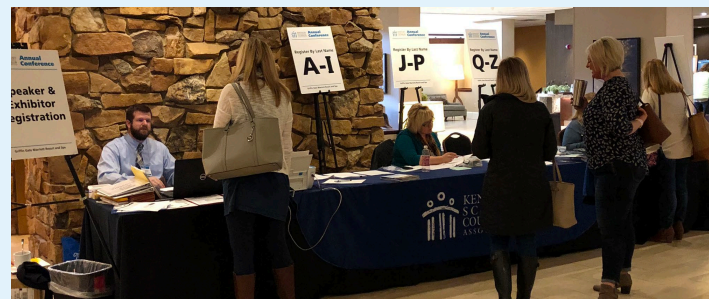
Booth space will be provided in our exhibit hall at which your organization and its products or services can be promoted (Valued at \$500).

1/2-page program acknowledgment in Participants Manual.

Opportunity to insert materials into Participants' Tote Bags.



Thanks! To Our
**Registration and
Information Center
Sponsor**



REGISTRATION & INFORMATION CENTER SPONSORSHIP