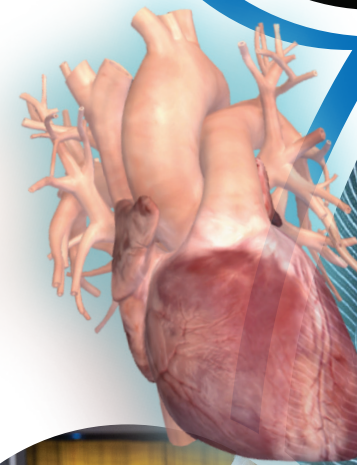




Scan for more info about a free demo or visit:
info.zspace.com/what-is-zspace

The zSpace Solution

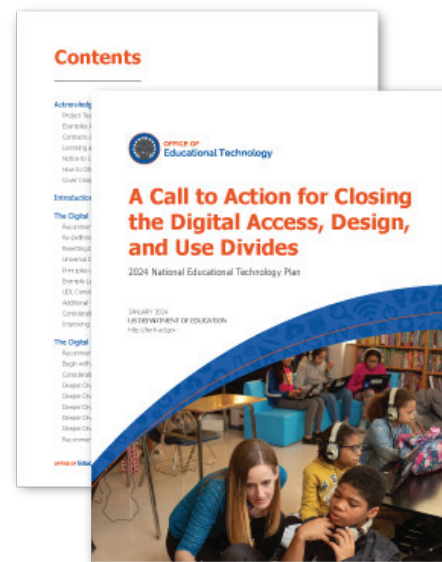
The zSpace Solution includes Windows-based AR/VR laptops, software, standards-aligned content, and professional development.



Research

Explore the IMPACT of zSpace on learning in STEM and CTE through research studies, reports, and use cases. Over the past ten (10) years, studies have indicated that learning with zSpace:

- Increases engagement
- Motivates students
- Promotes understanding
- Achieves outcomes
- Creates opportunities for critical thinking, communication, creativity, and collaboration
- Trains for careers and workforce



M. A. Jones Elementary School (Atlanta Public Schools) highlighted for 3D modeling with zSpace in USDOE National Education Technology Plan (2024)

*Significant improvement including a **16% increase** in post-test scores as a result of using zSpace.*

Rebecca Hite, Ph.D
Texas Tech University, 2022

Services

We offer comprehensive support services including training, implementation, and ongoing assistance to ensure educators effectively integrate zSpace technology into their curriculum. Our team is dedicated to helping schools maximize the potential of immersive learning.

For more details on research and services, visit zspace.com



Scan to contact sales or visit: <https://zspace.com/contact-sales>



Career Readiness powered by zSpace

Career Awareness

Open up the world of career possibilities for students. The immersive zSpace learning experience introduces students to a variety of careers, sparking early interest and curiosity.

Career Exploration

School is a critical time for students to develop their interests in specific fields of study and actively begin shaping their futures. With zSpace, students can explore various career paths at a deeper level empowering them to make informed decisions about their future coursework and programs of study.

zSpace for STEM

Elementary and Middle School

zSpace solutions for Elementary and Middle school engages young minds in learning through interactive hands-on experiences and simulations in STEM and computer science. From exploring the solar system to dissecting virtual organisms, zSpace brings lessons to life, igniting curiosity and sparking a passion for learning.



High School

The zSpace High School Solution prepares high school students for college and careers leveraging AR/VR to provide simulations and interaction with concepts in STEM and computer science.



Career Preparedness

Equip students with the tools needed for success at the high school and post-secondary levels. zSpace offers an unparalleled opportunity to deepen expertise in specific academic areas and programs of study. Completing certification programs and programs of study ensures that students are well-prepared for the demands of the workforce.



Career & Technical Education

Advanced Manufacturing & Robotics

Ignite creativity and innovation in CTE learners with hands-on experiences in advanced manufacturing and robotics, equipping them with the skills needed for high-demand industries.

Health Sciences

Elevate medical training with lifelike simulations, empowering CTE learners to develop critical skills and enhance patient care.

Transportation

Immerse CTE learners in virtual transportation scenarios, honing essential skills and promoting safety in real-world situations.

Agriculture & Food

Immerse CTE learners in virtual farm environments, cultivating a deep understanding of agricultural processes and fostering sustainable practices.

Information Technology

Equip CTE learners with practical skills through interactive IT experiences, preparing them for the dynamic digital landscape.

Skilled Trades

Empower CTE learners to master trades through realistic simulations, allowing them to gain hands-on experience and excel in their chosen field.



Technical Specifications

Operating System
Windows 11 Pro 64-bit

CPU and Chipset
Intel® Core™ i7-1360P Processor
18M Cache, up to 5.00 GHz

Network
Intel® Wi-Fi 6E AX210

Display
14 inch QHD (2K) 2240x1400px in 2D Mode, 1220x700px in 3D Mode

Storage
512GB PCIe 3.0 SSD

Memory
16GB DDR4 (1x16) SODIMM

Webcam
1280 x 720 resolution
720p HD audio/video recording

Graphics
Intel® Iris®

Dimensions
31.6 x 23.0 x 1.95 cm

Ports
3x USB-C (PD, DP, Data)
2x USB-A 3.2
HDMI
Ethernet RJ45
MicroSD Card Reader
3.5mm Audio Jack
Kensington Mini Lock



Inspire 2 Technical Specifications

Operating System
Windows 11 Pro 64-bit

CPU and Chipset
Intel® Core™ i5-13420H

Inspire 2 Pro
Intel Core™ i7-13620H processor

Memory
Dual-channel 16GB DDR5 SDRAM

Inspire 2 Pro
Dual-channel 32-GB DDR4 SDRAM

Display
15.6" HD Display with IPS technology
Ultra HD 3840 x 2160 in 2D mode, Acer ColorBlast technology, Pantone® validated, Delta E<2, 100% Adobe RGB color gamut, SpatialLabs 3D Stereoscopic module, 1920 x 2160 in 3D mode

Dimensions
Height: .4 inch -.1 inch (9.9mm-28.4mm)
Width: 14.1 inches (358.5mm)
Depth: 10.4 inches (263.4mm)

Graphics
NVIDIA® GeForce RTX™ 4050 with an 6GB GDDR6 VRAM

Storage
512GB PCIe Gen4, 16 Gb/s, NVMe SSD

Inspire 2 Pro
1TB PCIe Gen4, 16 Gb/s, NVMe SSD

Webcam
1280 x 720 resolution
720p HD audio/video recording

Eye-Tracking Camera
1280 x 480 resolution (VGA x 2) with SpatialLabs technology

Wireless and Networking
Intel® Wireless Wi-Fi6 AX201
802.11a/b/g/n/acR2+ax wireless LAN
Supports Bluetooth® 5.1
Gigabit Ethernet, Wake-on-LAN ready

Input and Output
USB 3.2 Type-C w/ Thunderbolt™ 4 port
3x USB A 3.2 Type A ports
HDMI port with HDCP support
Ethernet (RJ-45) port