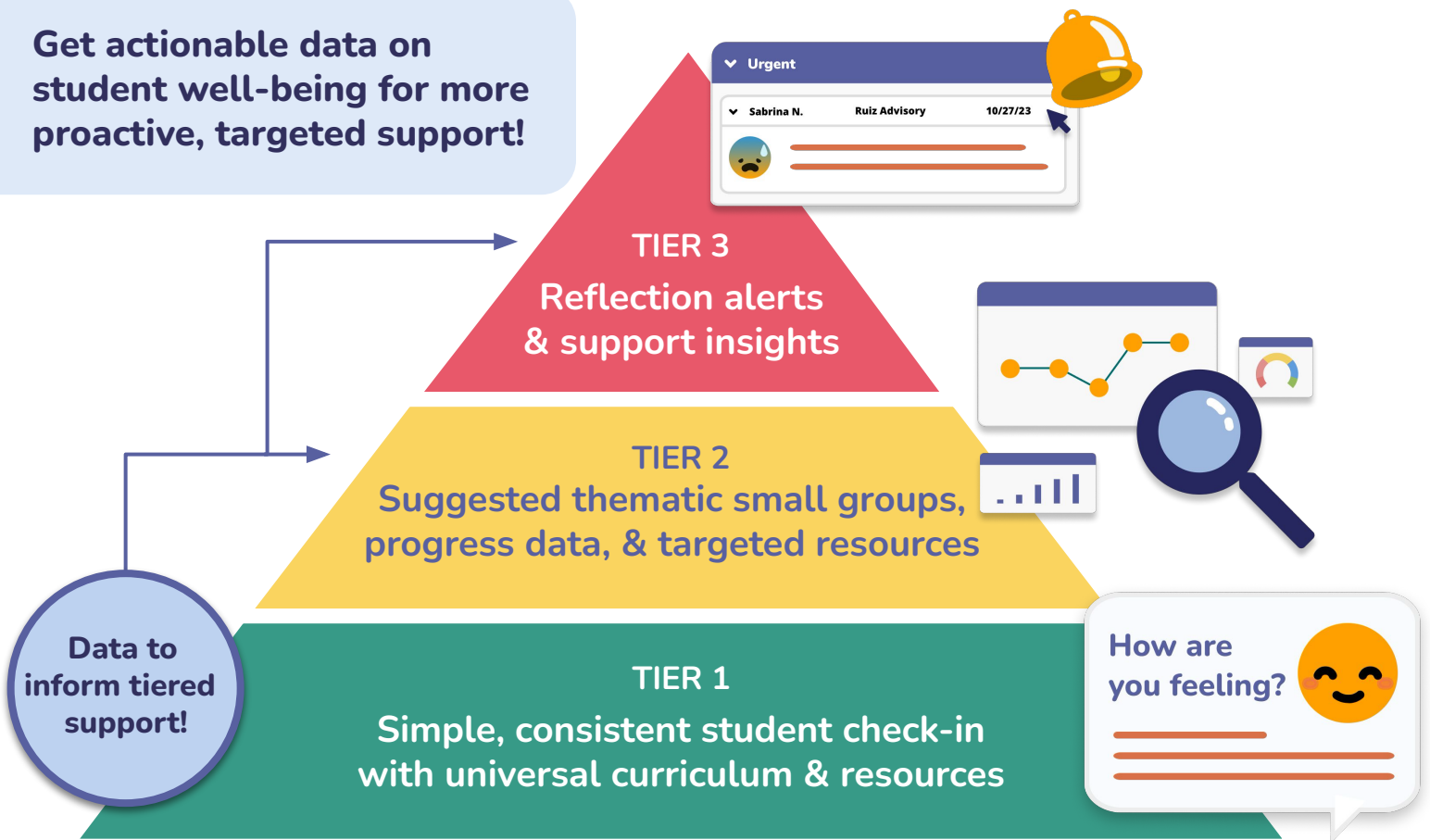


Proactive, student-centered MTSS



Get actionable data on student well-being for more proactive, targeted support!



A strong Tier 1 foundation that reaches EVERY student and allows for early action on Tier 2 & 3

"Sown To Grow has helped us as a Tier 1 resource to be able to step in and be responsive to students but it's also helped us be like 'who are the students that truly need the additional supports that we have?' Our supports our limited and we don't have this endless bucket of resources, so it helped us utilize and actually rebuild and reimagine our MTSS system for mental health and well-being."



Kasey Klappenback

used Sown To Grow in two large districts:
Former Assistant Superintendent, Pajaro Valley USD
& Current Assistant Superintendent, Stockton USD

Meet with
us to
learn more!



Watch a
video
overview!



Our impact is researched & funded by:



US Department
of Education



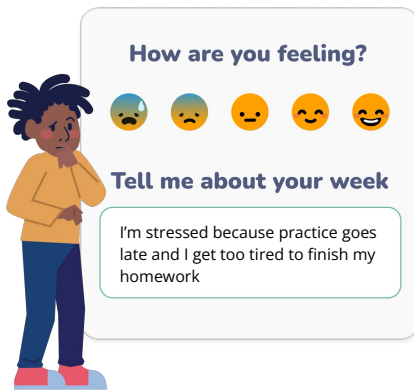
The National
Science Foundation



Digital Promise
Accelerating Innovation in Education

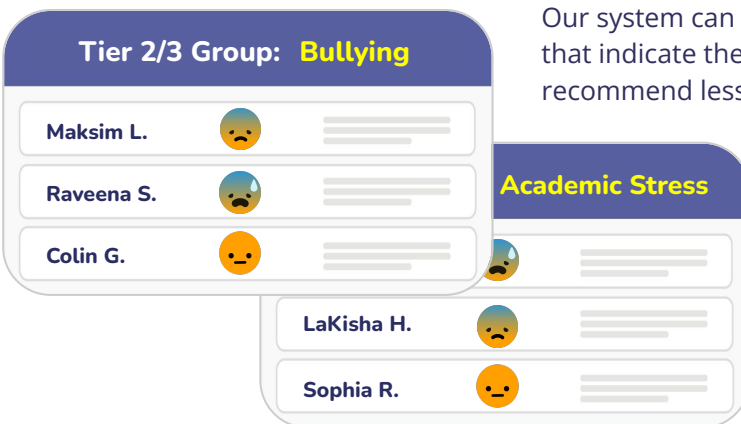
NewSchools

1 Students consistently complete an emotional check-in to build strong relationships & practice life skills.



Students get an approachable space to share how they are doing and receive responses from teachers. It is a scalable Tier 1 approach to ensuring EVERY student is heard.

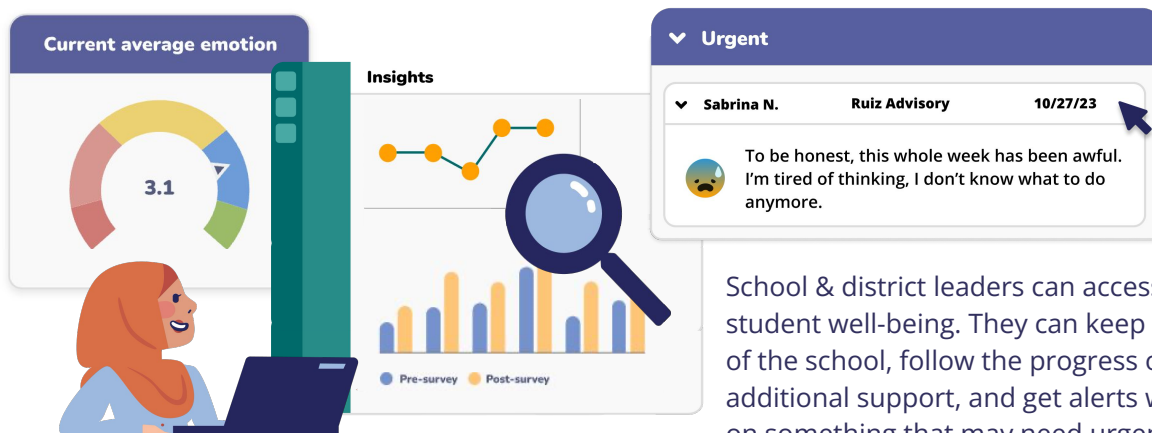
2 Our system provides themed Tier 2 & 3 student groupings & support resource recommendations.



Our system can identify groups of students reflecting on common themes that indicate they may need additional Tier 2 or 3 support, then recommend lessons & resources for working with those students.



3 Monitor student progress with real-time well-being insights, & get alerts for students with urgent needs.



School & district leaders can access real-time reports on student well-being. They can keep a pulse on the culture of the school, follow the progress of students receiving additional support, and get alerts when a student reflects on something that may need urgent, Tier 3 attention.