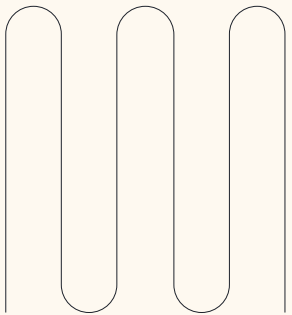


A thick, yellow, curved arc graphic positioned above the word "The" in the title.

# The DESSA System

The only research-based approach that can **accurately screen** for student behavioral needs **in less than 1 minute.**



**Measure with  
post-pandemic  
baselines. Develop  
student resilience skills.**

# What if you could...

Cut discipline referrals by

# 76%

like Humble Independent School District, TX

Reduce out-of-school suspensions by

# 80%

like Boerne Independent School District, TX

Improve attendance by

# 47%

like Lowell Public Schools, MA

## It's Possible with the DESSA System.

**\*According to a Johns Hopkins study that included:**

# 38,131

students

# 326

schools

# 20

states



Students whose **categorical score increased** on the DESSA were shown to have **academic growth from 10–13 percentile points** or the equivalent of **1 full year of academic achievement gains**.

**Pre-Assessment**

Need  
T-Score: **38**



**Post-Assessment**

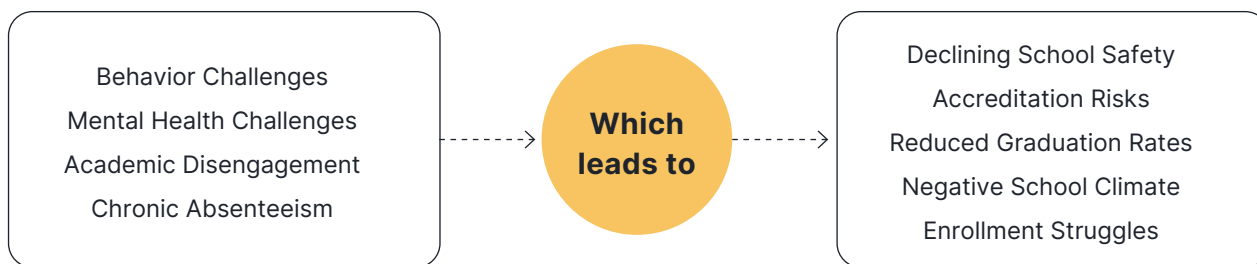
Typical  
T-Score: **44**

\*Balfanz, Robert and Vaughan Byrnes. "Connecting social-emotional development, academic achievement, and on-track outcomes." The Everyone Graduates Center at the Johns Hopkins University School of Education (2020).



# Without resilience skills, students struggle with learning and mental wellbeing.

Educators need reliable and practical social, emotional, and behavioral screeners to accurately identify students at risk of..



**The DESSA is the trusted predictor of academic performance and student behavioral needs with 20+ years of peer-reviewed evidence.**

Students identified as having a “Need for instruction” with the DESSA-mini are

**450%**

more likely to be suspended or expelled

Of students identified as having mental, emotional, and behavioral needs by the DESSA...

**75%**

have **basic or below basic** reading skills

**62%**

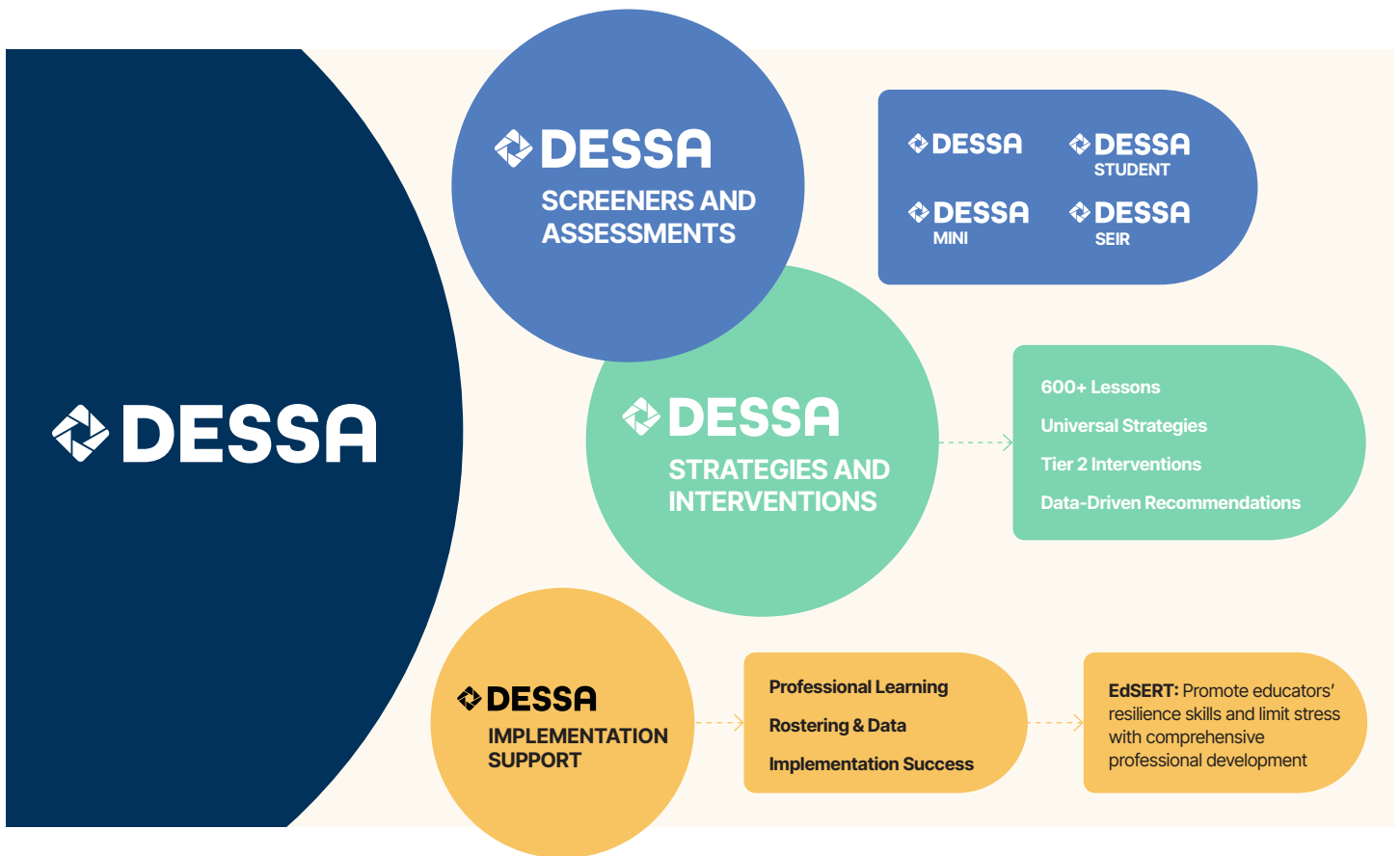
have **basic or below basic** math skills

Shapiro, Valerie., Kim, B.K. Elizabeth, Robitaille, Jennifer L., LeBuffe, Paul A., “Protective Factor Screening for Prevention Practice: Sensitivity and Specificity of the DESSA-mini.” School Psychology Quarterly 32, no. 4 (December 2017): 449-464. LeBuffe, Paul A. & Robitaille, Jennifer L., “Social and emotional assessment and intervention: A promising approach to reducing the achievement gap” (presentation, National Conference on Student Assessment, Philadelphia, PA, June 2016).

# The DESSA System

## Build resilience for learning and for life.

The DESSA System uses research-based screeners and assessments to proactively identify students' social-emotional strengths and risky behaviors to inform data-driven recommendations for tiered instruction.



With increasingly difficult obstacles facing districts, educators have implemented social-emotional curriculum, climate surveys, and behavior monitoring programs that fall short because these general approaches don't accurately identify the root cause of individual behavior challenges.

**The DESSA System brings the whole child into focus - students are no longer seen as risks to be managed, but learners with the skills to thrive.**

# Rooted in Resilience Research to Guide Students Through Adversity

The DESSA research team is committed to evidence-based practices you can trust when making data-driven decisions that promote equitable outcomes.

# 130+

## Peer-reviewed publications

demonstrate the DESSA's reliability and validity as a measure of social and emotional competence.



## The DESSA meets or exceeds psychometric and validity standards put forth by the

- American Educational Research Association
- American Psychological Association
- National Council on Measurement in Education

## Our strength-based framework helps students develop skills across six competencies.

- Optimistic Thinking
- Self-Awareness
- Self-Management
- Social Awareness
- Relationship Skills
- Responsible Decision Making

The DESSA is the only assessment that measures Optimistic Thinking, the lynchpin of resilience theory and a key to wellbeing.

## Why a strength-based approach?

Assessing student strengths proactively promotes wellbeing, reduces stigmatization, increases student and family engagement, and improves student/teacher relationships, while accurately identifying students who may be at risk of negative outcomes because they have not yet developed the skills that will enable them to succeed.



# How does the DESSA System work?

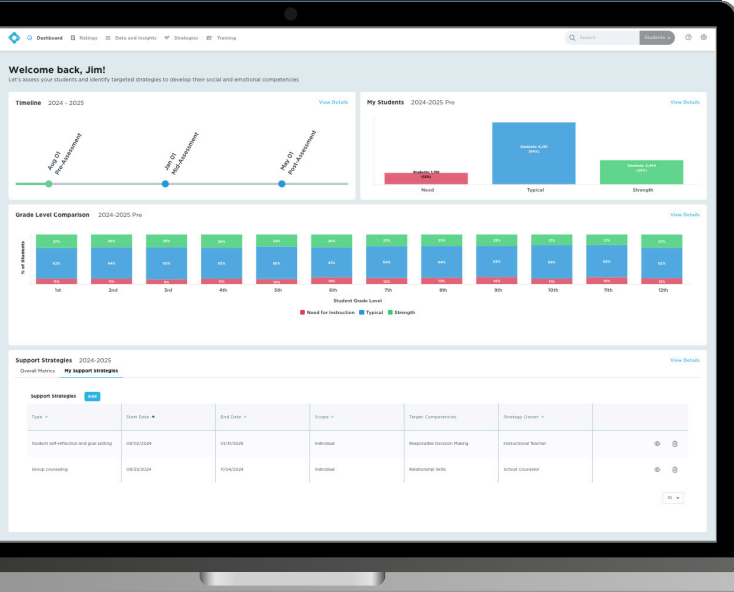
## We help districts...

Universally screen for social, emotional, and behavioral competence to identify the appropriate tier of support for all students

Benchmark against **post-pandemic baselines** to ensure the results are accurate and relevant to the challenges students face today

Hone student skills with data-driven tiered instructional recommendations and resources to cultivate resilience

By identifying the right students to support and providing tiered intervention resources to build protective resilience skills, we help you intervene before behavioral and mental health issues disrupt student learning.



*“Data is important, if we don’t know where we start, how do we know we made progress? The DESSA data is helping our schools pinpoint areas of need for students and place them in correct interventions, instead of having a blanket approach.”*

— Cynthia Price

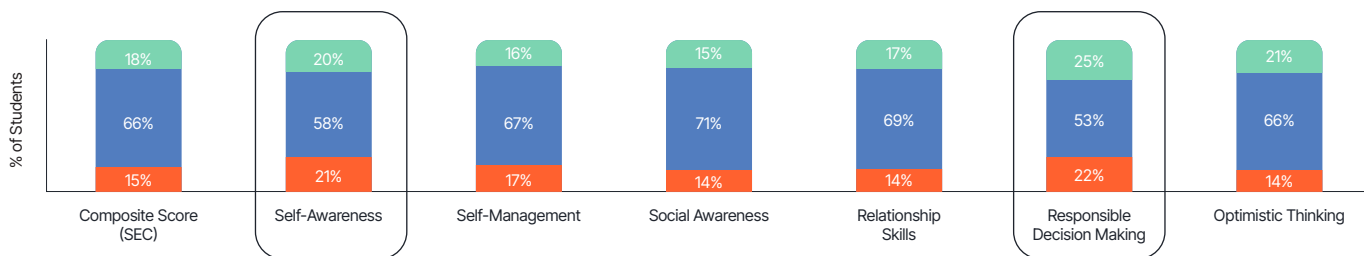
MSW, LCSW, BCD, Roswell Independent School District, New Mexico

# The Most Reliable Social, Emotional, and Behavioral Data for Your MTSS Framework

**DESSA skills align with student, classroom, school, and district goals.**

Tailor universal instruction for classrooms, grade levels, and schools based on actionable competency scores that reveal common skill gaps in groups of students.

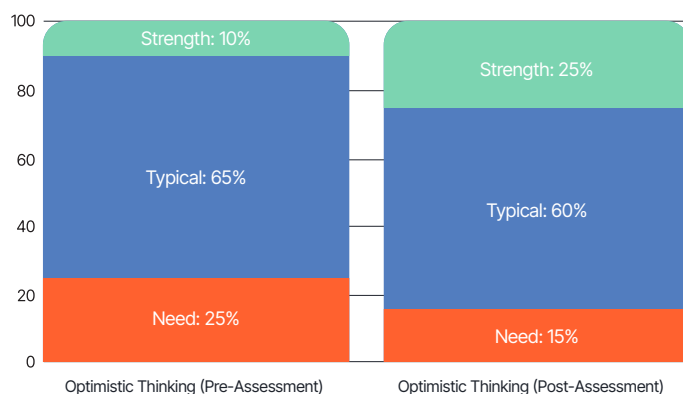
## Competencies Report: 8th Grade



According to DESSA data, 8th grade students in this example need the most support in Self-Awareness and Responsible Decision Making - a great place to start when planning universal instruction.

## Measure progress towards state standards, portrait of a graduate skills, and social-emotional curriculum goals.

The Impact Report quickly shows how students' strengths increased on specific competencies between rating windows.





**Ready to build student resilience  
with the DESSA System?**



**Scan the QR code**  
to learn more or  
request a demo.